

The Industrial Development Authority founded.

1949



The Export Profits Tax Relief (EPTR) is introduced.

1956



LEO Pharma established operations in Dublin. Today, the company manufacture a range of topical products for markets all over the world.

1958



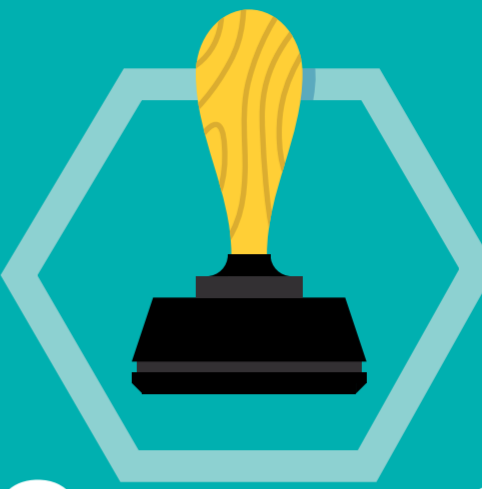
IDA Ireland had a presence in New York since 1958 with a formal office opening in 1966.

1966



The Industrial Development Act provides for the Industrial Development Authority, a single new independent state agency and the EPTR is extended to 1989-1990.

1969



In October, the Tokyo office opens its doors.

1972



Ireland joins the European Economic Community (EEC).

1973



The EPTR is replaced with a special 10% rate of Corporation Profit Tax for all manufacturing industry from 1981-2000.

1978



IDA Ireland is given the power to provide employment grants.

1981



The Financial Services Act establishes the International Financial Services Centres in Dublin, which is marketed internationally by IDA Ireland.

1987



Since 1989, Intel has invested \$13.9 billion in Ireland creating the most advanced industrial campus in Europe. Today, Intel has 4,500 employees across Ireland.

1989



The Industrial Development Act establishes three agencies: IDA Ireland for overseas industry; Forbairt for indigenous industry, and Forfas as the policy arm.

1993



Agreement is reached on a universal 12.5% corporation tax rate for all trading companies from 2003 onwards.

1998



A subsidiary of Prudential Financial Inc., Pramerica set up in Letterkenny, Co Donegal, where the company today employs 1,800+ people.

2000



In the wake of the global financial crisis, FDI in Ireland proves resilient with investment increasing by foreign based companies.

2008



Winning: Foreign direct investment 2015 - 2019 launched, its aim is to create 80,000 new jobs in client companies and win over 900 new investments for Ireland.

2015



IDA Ireland clients employ 229,000+ people in Ireland. They spend €19.2bn in the Irish economy on payroll, Irish services and materials and account for 67% of Ireland's total exports.

2019

